

# Company Introduction

(주) 티앤디테크는 최첨단 핵심  
소재기술을 바탕으로

새로운 패러다임을 선도하는 기업입니다.

자세히 보기

## T&D TECH VINA



The Company Adding a Value



# CONTENTS

---

- 01 Company Overview
- 02 Company History
- 03 Organizational Charts
- 04 Facility Status
- 05 Business Fields
- 06 Company Introduction
- 07 Main Products
- 08 Company Location



# 1. Company Overview



Company name: T&D TECH / T&D TECH VINA (Vietnam)

Date of establishment: January 23, 2015(Head Office) / June 16, 2015 (Vietnam)

Capital: 100 million KRW (Head Office) / 300,000 USD (Vietnam)

Factory size: 5,470㎡ (Clean Room: 952㎡/Class 1000) (Vietnam)

Chief Executive Officer: Lee Kyoung-jin

T&D TECH VINA Head: Lee Pil-jin

Business fields: Electronic parts development and processing (tapes, films)

Head Office address: **A-1103, Gwanggyo SK View Lake, 25, Beopjo-ro, Yeongtong-gu, Suwon-si, Gyeonggi-do, Republic of Korea**

Vietnam subsidiary address: Lot 0-1, Que Vo Industrial Park(expanded area), Phuong Mao Commune, Que Vo District, Bac Ninh Province Vietnam

Head Office contact: T) 031-213-7771 / F) 0303-3131-0213

Vietnam subsidiary contact: T) 070-5015-3904 / F) 02413-952-502





# 2. Company History

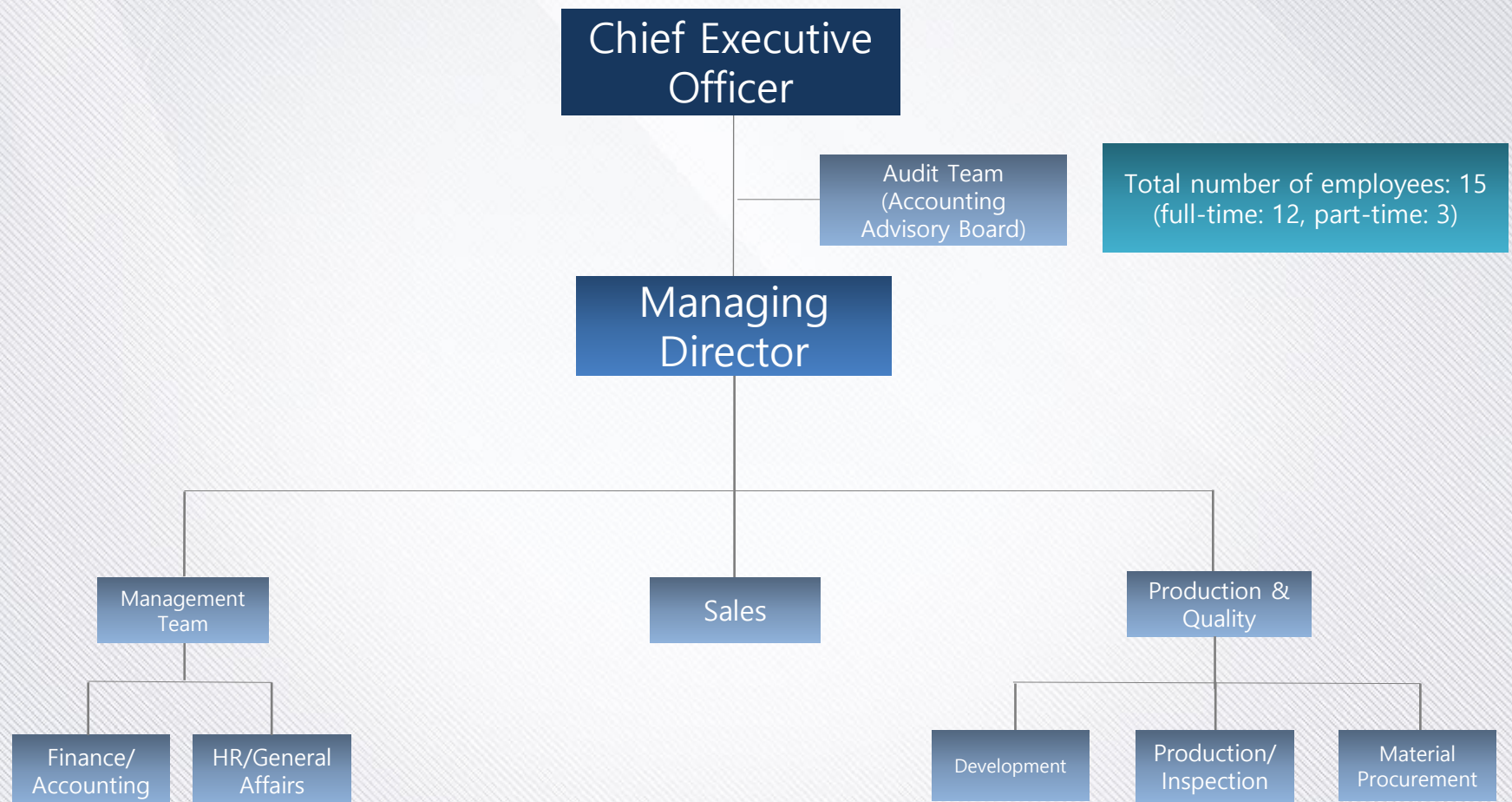


- May 2021: Developed VINA S22 (Rainbow) CAM DECO with Samsung's 1st-tier supplier Synopex
- November 2020: Supplied VINA P3 CAM DECO to Samsung's 1st-tier supplier Synopex
- March 2020: Supplied VINA REV DECO to Samsung's 1st-tier supplier Synopex
- August 2019: Supplied metal sheets to Samsung's 1st-tier supplier Synopex (head office)
- May 2019: Expanded and relocated T&D TECH VINA
- November 2018: Passed an audit for Samsung's 1st-tier supplier Segyung Hitech VINA/  
Registered as Samsung's 2nd-tier supplier
- September 2018: Passed an audit for YOUNGBO VINA
- March 2018: Developed and supplied the TOTE battery tape for Youngbo VINA
- September 2018: Developed and supplied the polymer battery for Youngbo VINA
- March 2017: Supplied mock-ups to Samsung's 1st-tier-supplier Youngbo VINA
- October 2016: Audit for Samsung's 1st-tier supplier Iljin Display
- September 2015: Supplied products to Samsung's 1st-tier suppliers J World and Youngbo VINA
- August 2015: Completed T&D TECH VINA offices and clean room and produced prototypes
- June 2015: Established T&D TECH VINA, the Vietnam subsidiary
- May 2015: Registered as a supplier for Hansol Technics
- Jan 2015: T&D TECH established



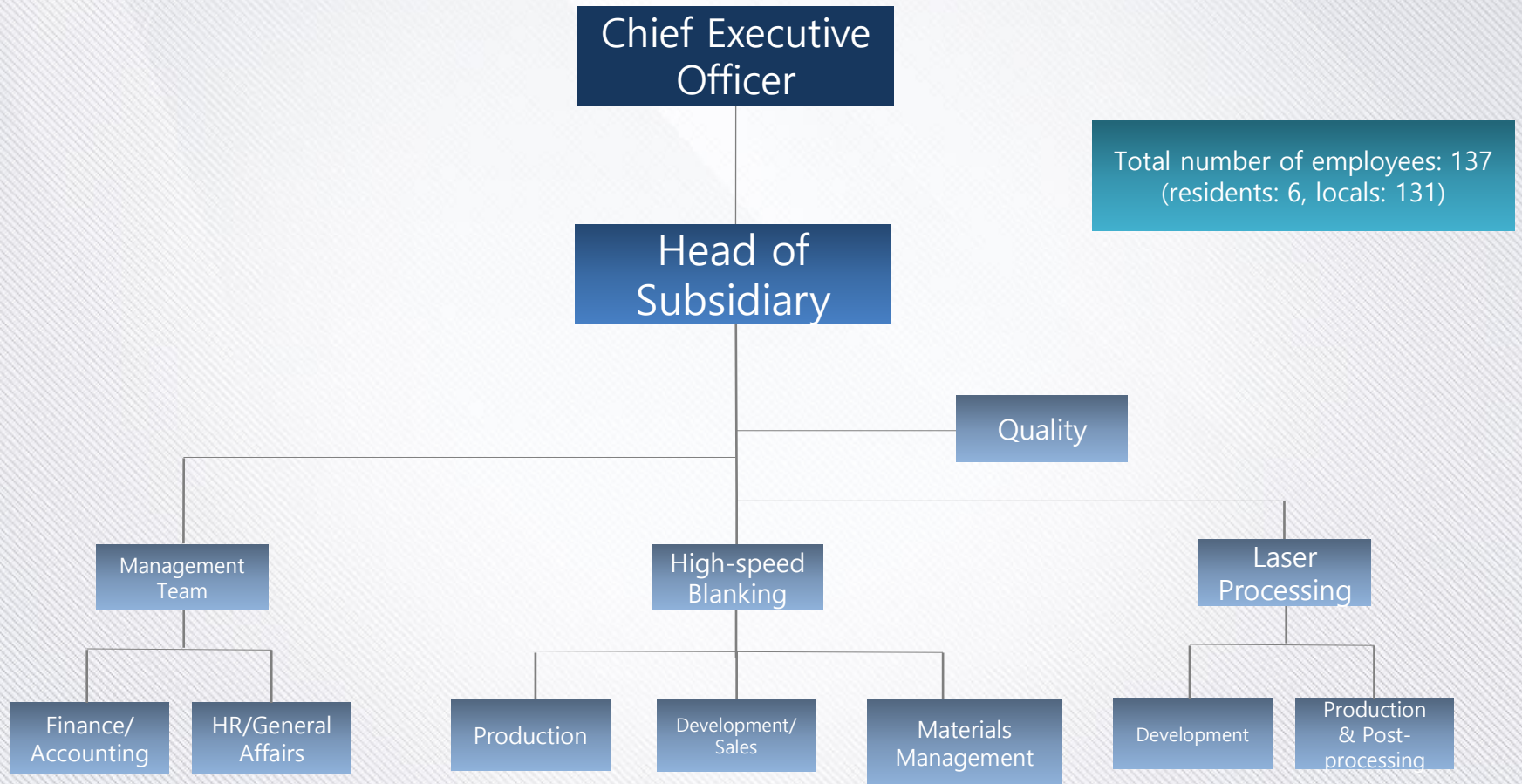


# 3. Organizational Chart\_Head Office





# 3. Organizational Chart\_Vietnam Subsidiary



# 4. Facility Status



Equipment	Model	No. of Units	Notes
High-speed Press (5 lines)	GSPIN-3232	1 set	Vietnam
High-speed Press (5 lines)	TK-4038LM	3 sets	Vietnam
High-speed Press (5 lines)	TK-4540LM	2 sets	Vietnam
High-speed Press (5 lines)	TK-4038LM	1 set	Vietnam
High-speed Press (5 lines)	SJ-3232LM	1 set	Vietnam
High-speed Press (3 lines)	TK-3232LM	2 sets	Vietnam
High-speed Press (5 lines)	TK-3232LM	1 set	Head Office
High-speed Press (3 lines)	TK-2525LM	1 set	Head Office
CO2 Laser Cutter	VMFC-101A	5 sets	Vietnam
Roll Inspection System	HRMV-3020	3 sets	Vietnam
Two-color Printer	HLT320-2C FULL ROTARY	1 set	Vietnam
2D Measuring Machine	OLM-3020	1 set	Vietnam
Cutter	HCP-310L	8 sets	Vietnam subsidiary: 7 sets, Head Office: 1 set
Adhesiveness Tester	KVN-TS01(500N)	1 set	Vietnam
Wear Resistance Tester	KNK-620L	1 set	Vietnam



# 4. Facility Status\_Die Cutters



TK-3232LM SPEC

TK-4038LS SPEC

Die-cut Dimensions	300 x 300 (mm)	400 x 365 (mm)
Max. Web Width	320mm	400mm
Max. Speed	250rpm	220rpm
Power Consumption (Electronic Mode)	6.0kw	6.0kw
Machine Dimensions (L x W x H)	2,000 x 1,300 x 1,700 (mm)	1,600 x 1,250 x 1,400 (mm)
Net Weight	2,200kg	1,900kg



# 4. Facility Status\_Die Cutters

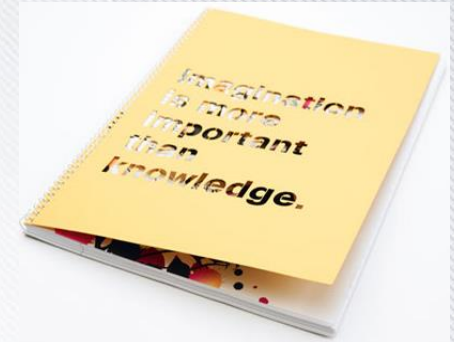


VMFC-101A

Model		VMFC-101A
Processed Materials	Films	PET, PE, PP, OAC, OCA, PEEK, etc.
	Uses	Sill plus film, temperature coating film, etc.
Specifications	Wavelength	930-1064µm
	Field size	Max. 500 x 500 (mm)
	Laser output	85w
	Accuracy (tolerance)	≤ ± 50µm
	Film thickness	Film ≥ 50µm
	Cutting speed	≤ Max. 450mm/s
Processing Method	Loading type	Manual/Loader
	Unloading type	Manual/Unloader
	Cutting method	On the fly



# 4. Facility Status\_CO2 Laser Cutter



- Superb performance in processing nonmetallic materials
- Modular design requires little maintenance
- Uses digital galvanometer for super-high speed and super-precise marking
- Supports compact lightweight design and continuous marking MOF for moving objects (optimal for automated lines)
- Supports continuous marking MOF for moving objects (optimal for automatic lines)
- **Application Fields**
  - Films / Leather products / Fabrics (cotton, denim, etc.) / Paper / PVC / Wood / Ceramics / Glass
  - Acrylic / Plastic / Vinyl, etc.



# 4. Facility Status\_Printing Machines



## KVN-TW01(500N)

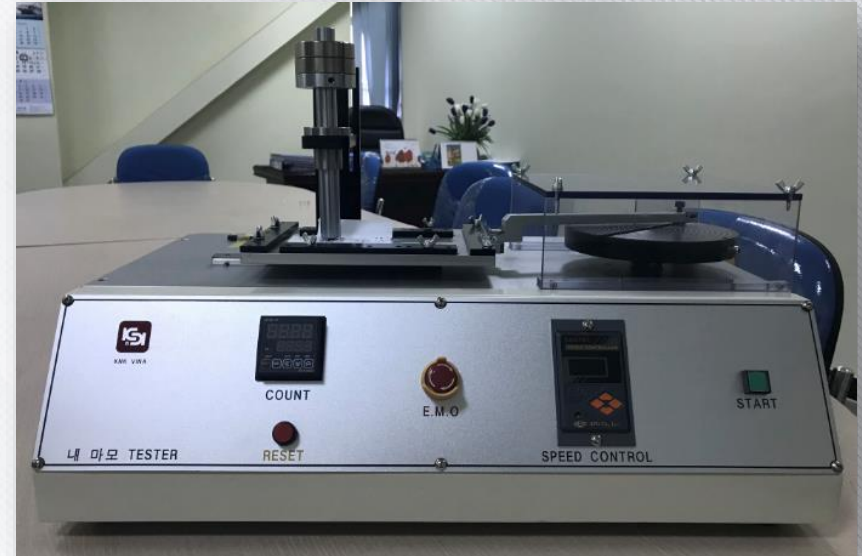
	Model	KVN-TW01(500N)
Measurement	Peak load value	500N (50kgf)
	Resolution	0.1N (0.01kgf)
	Tolerance	±0.5%
	Data interface	RS-232C (9-pin female)
Mechanism (stand)	Stroke	Approx. 200mm
	Feeding method (lead width)	Feed screw with 10mm lead
Electricity (motor)	Travel speed	5-200mm/min, Non-stop
	Speed resolution	2mm/min
	Length resolution	0.1mm
	Auto/manual cycle	Yes
Adhesive Table		50 X 120 (mm), SUS304
Use Environment	Operating temperature	5-35°C
	Operating humidity (relative)	15-80%R°CH



# 4. Facility Status\_Measuring Equipment



OLM 3020 SPEC



Abrasion Rubbing Test SPEC

Measurement Range	300 x 300 x 200 (mm)
Dimensions	766 x 803 x 1015 (mm)
Camera	1/3" High-resolution Color CCD Camera
Precision Exy	3.0 + L/150 $\mu$ m
Precision Ez	5.0 + L/150 $\mu$ m
Magnification	Manual zoom (30x - 180x)

Round-trip Distance	0-100mm
No. of Tests	0-9,999 times
Test Speed	0-66rpm
Mass of Weight	500-1,000g
No. of Axes	1
Dimensions (L x W x H)	620 x 400 x 410 (mm)



# 4. Facility Status\_Measuring Equipment



KVN-TW01(500N)

	Model	KVN-TW01(500N)
Measurement	Peak load value	500N (50kgf)
	Resolution	0.1N (0.01kgf)
	Tolerance	±0.5%
	Data interface	RS-232C (9-pin female)
Mechanism (stand)	Stroke	Approx. 200mm
	Feeding method (lead width)	Feed screw with 10mm lead
Electricity (motor)	Travel speed	5 to 200mm/min, Non-stop
	Speed resolution	2mm/min
	Length resolution	0.1mm
	Auto/manual cycle	Yes
Adhesive Table		50 X 120 (mm), SUS304
Use Environment	Operating temperature	5-35°C
	Operating humidity (relative)	15-80%R°CH



# 5. Business Fields



## Electronic Parts Development/Processing

- Produces high-quality functional films and processed tape products
- Produces various types of products for TSP, LCD, FPCB, automobile and other fields
- Provides processing of various film products such as window, double-sided, insulated and protective tapes
- Batteries, glastic, mock-up tapes, camera modules, paper bands, DECO films for mobile phones, etc.

## Mobile Phone Accessories

- Produces protective films for mobile phones and devices
- Manages production and supply through the Vietnam subsidiary (T&D Tech Vina) for cost competitiveness

## Other Products

- Mass-produces S20 earphone bands and ear tips (S20 earphone packaging materials, paper fabric)
- Mass-produces packaging materials for Dorco products
- Produces adhesive films for Carrier air conditioner & air purifier products



# 6. Company Introduction\_Clean Room



- ❖ The clean room complies with Class 1000 and lower standards. Particle measurements are taken twice daily (morning/afternoon).
- ❖ Particle measurement scheduling: Before and after the Class 500 standard is met (Production Room / Inspection Room / OQC)





# 6. Company Introduction\_General Workplaces



- ❖ Particle measurement scheduling : Before and after Class 500 is met





# 6. Company Introduction\_Inspection Room & OQC



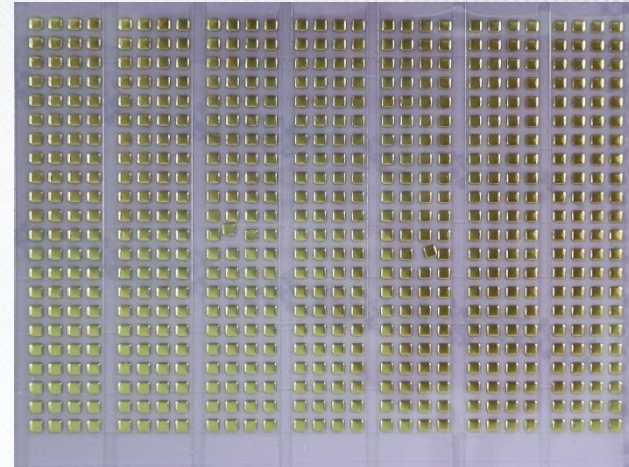
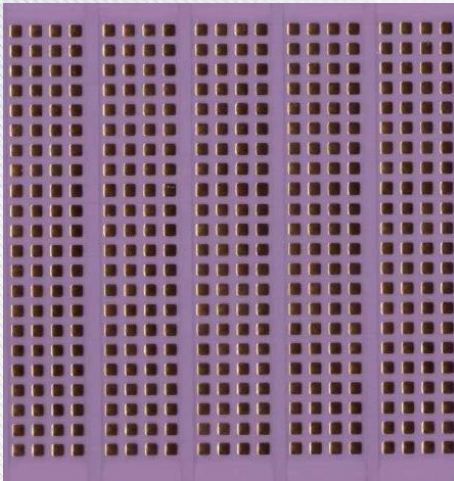


# 6. Company Introduction\_Raw Materials/Finished Products Storage & Pressroom





# 7. Main Products\_Metal Sheets (Gilded Products)



METAL SHEET (FRONT)



METAL SHEET (BACK)



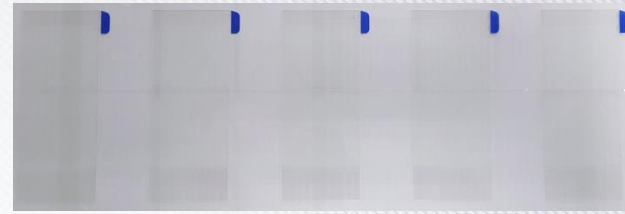
# 7. Main Products\_Polymer Battery Tapes



A5 FRONT TAPE



A7 FRONT TAPE



A6 FRONT TAPE



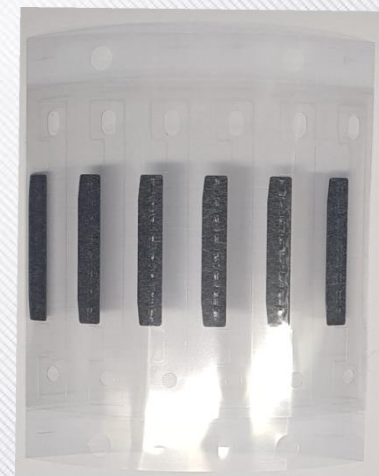
SIDE TAPE



TOP TAPE



BOTTOM TAPE



PORON TAPE



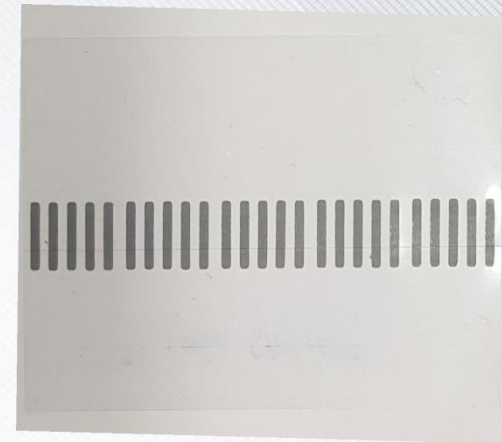
# 7. Main Products\_Tote & J4/J6 Mesh



LABEL



PORON



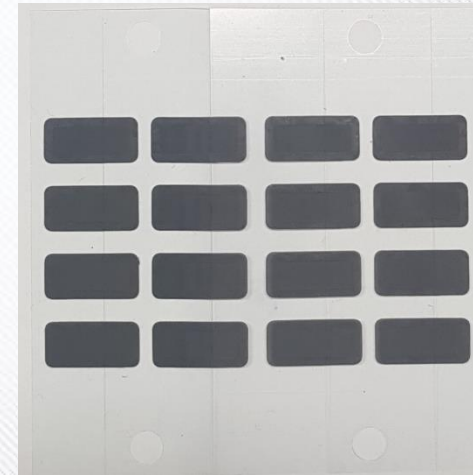
MESH



NOMAX



TOP



MESH



# 7. Main Products\_Mock-ups



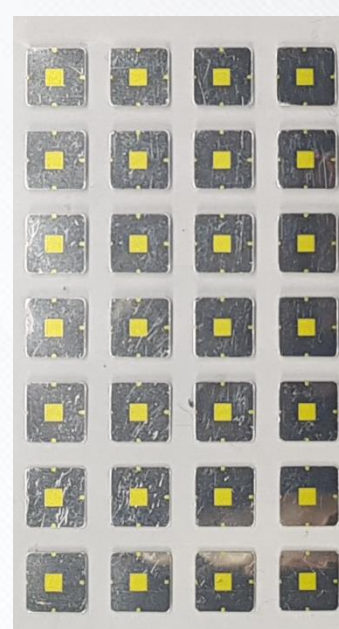
J7 Duo



J8



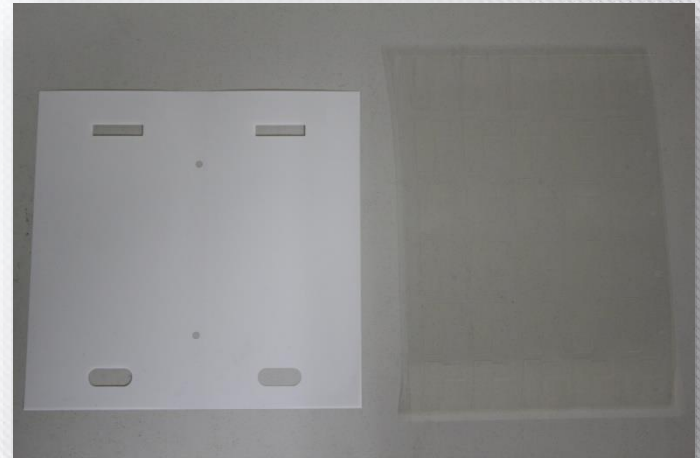
J8 PLUS



FLASH SHEET



# 7. Main Products \_Window Product Lines



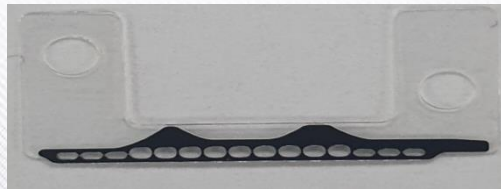
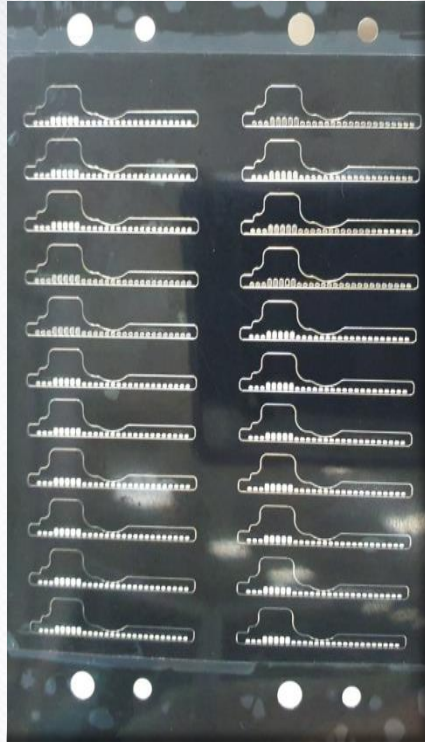


# 7. Main Products \_Earphone Bands



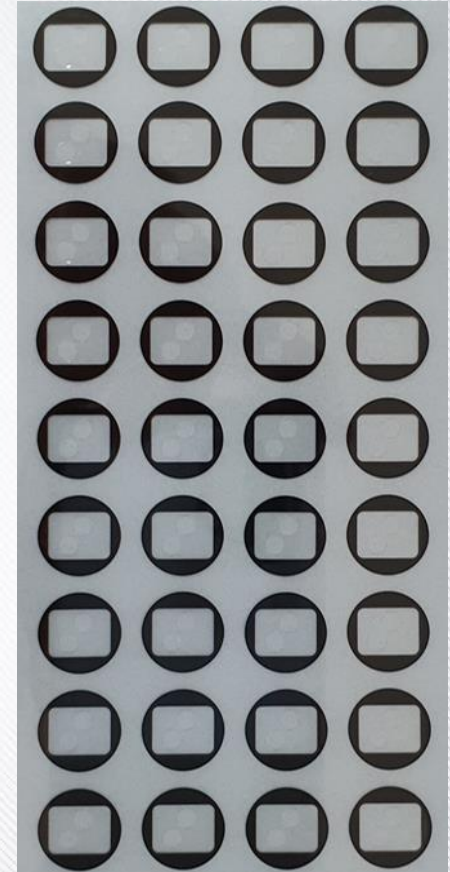
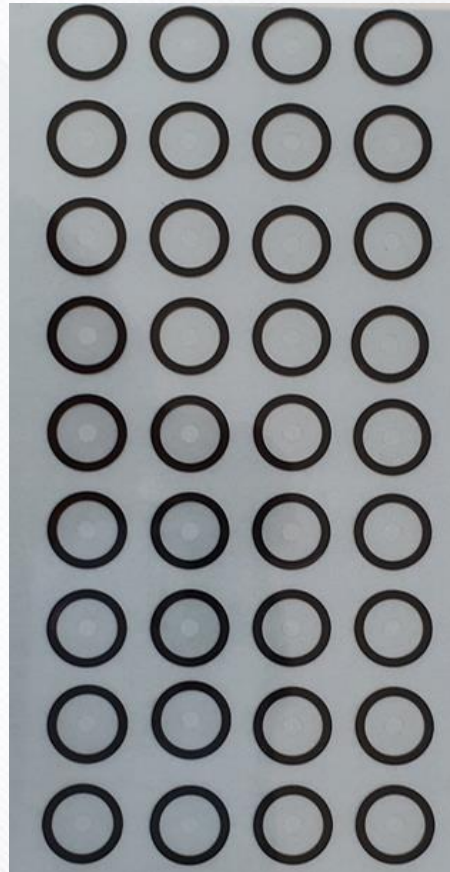


# 7. Main Products \_RCV DECO



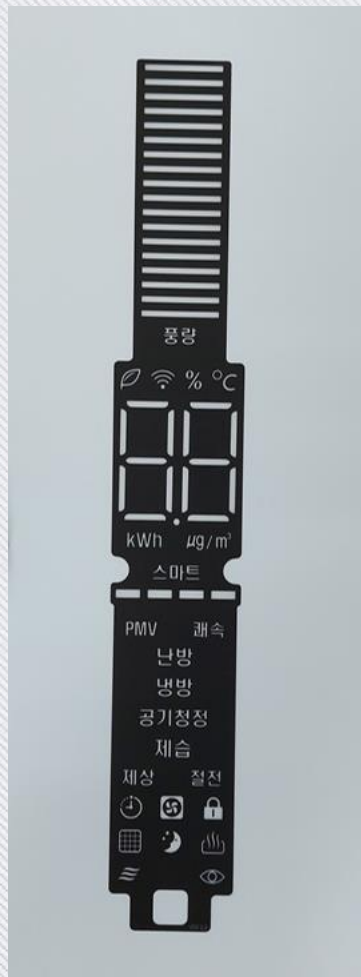


# 7. Main Products\_CAM DECO

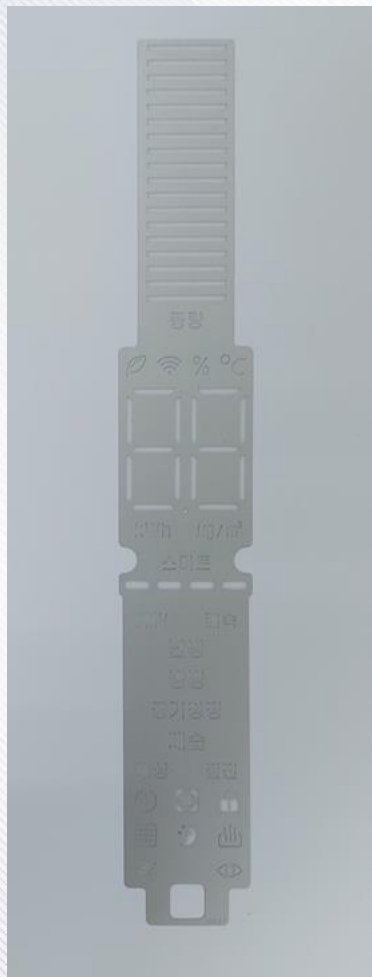




# 7. Main Products \_PET Printing



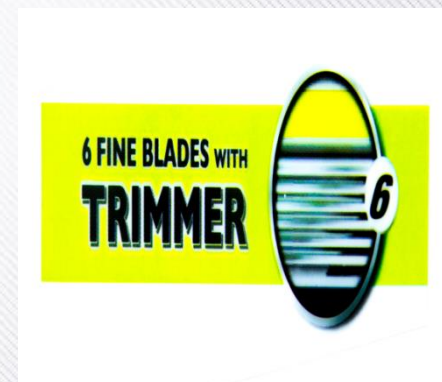
AIR CONDITIONER



RAZORS

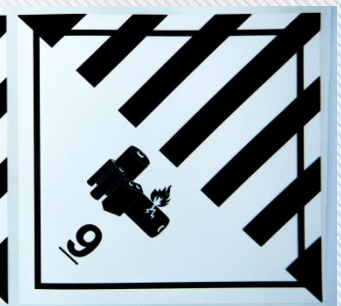
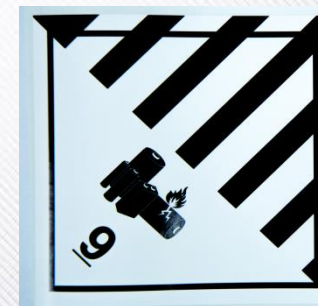


RAZORS





# 7. Main Products\_Label Printing





# 8. Company Location\_Head Office



A-1103, Gwanggyo SK View Lake, 25,  
Beopjo-ro, Yeongtong-gu, Suwon-si,  
Gyeonggi-do, Republic of Korea



# 8. Company Location\_Vietnam Subsidiary





